

3D ISSUE PRINTER TUTORIAL



© Trinity Innovations 2009
All Rights Reserved

www.3DIssue.com

INTRO:

3D Issue Printer is a windows printer driver that will allow you create page turning digital editions from any windows application with a print option.

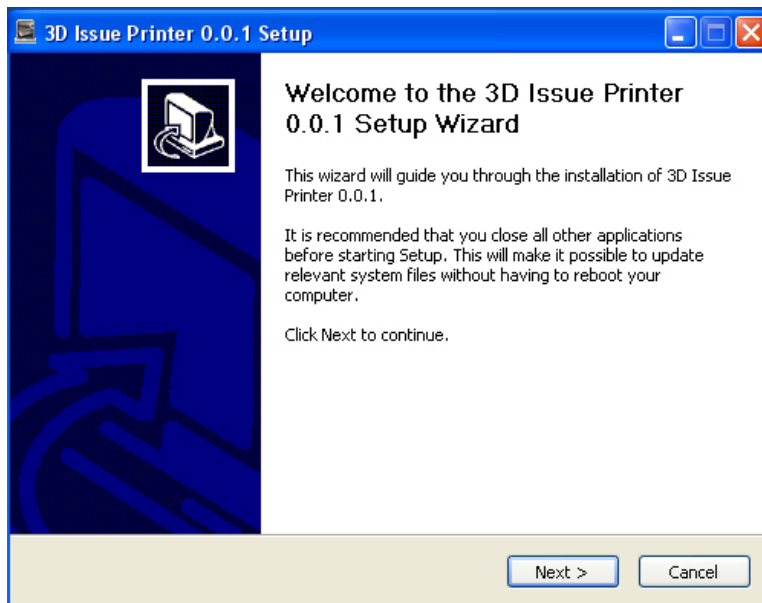
Would you like a free license of this software for your company. We are looking to include innovative samples & case studies of digital editions that have been generated using the 3D Issue Printer. Check out our tutorials and sent us a link to your sample. If we like it, we will write about it on our site and send you a free copy of the software. Contact sales@3dissue.com with your examples.

PART ONE:

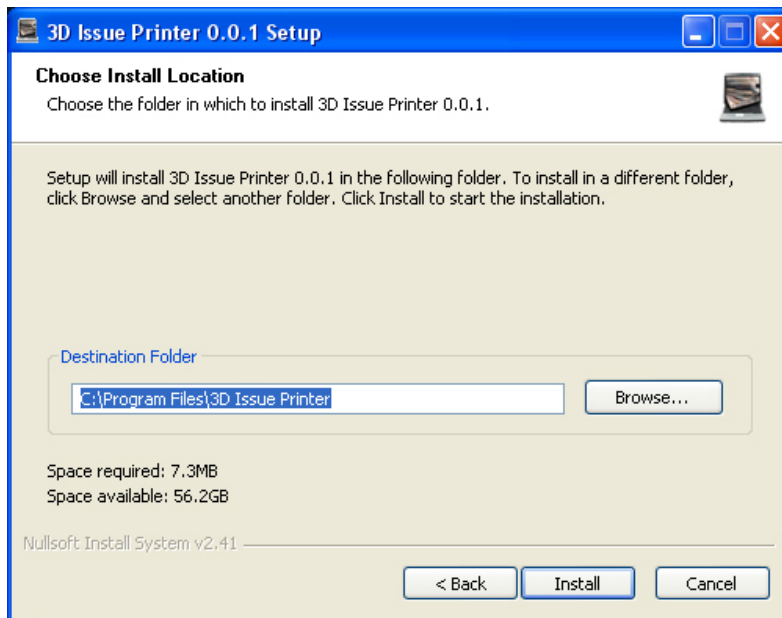
INSTALLING THE SOFTWARE

1.

Once you have downloaded the installer from our website. Unzip the file and double-click on the setup.exe to initiate the installation process. Click on Next to continue.



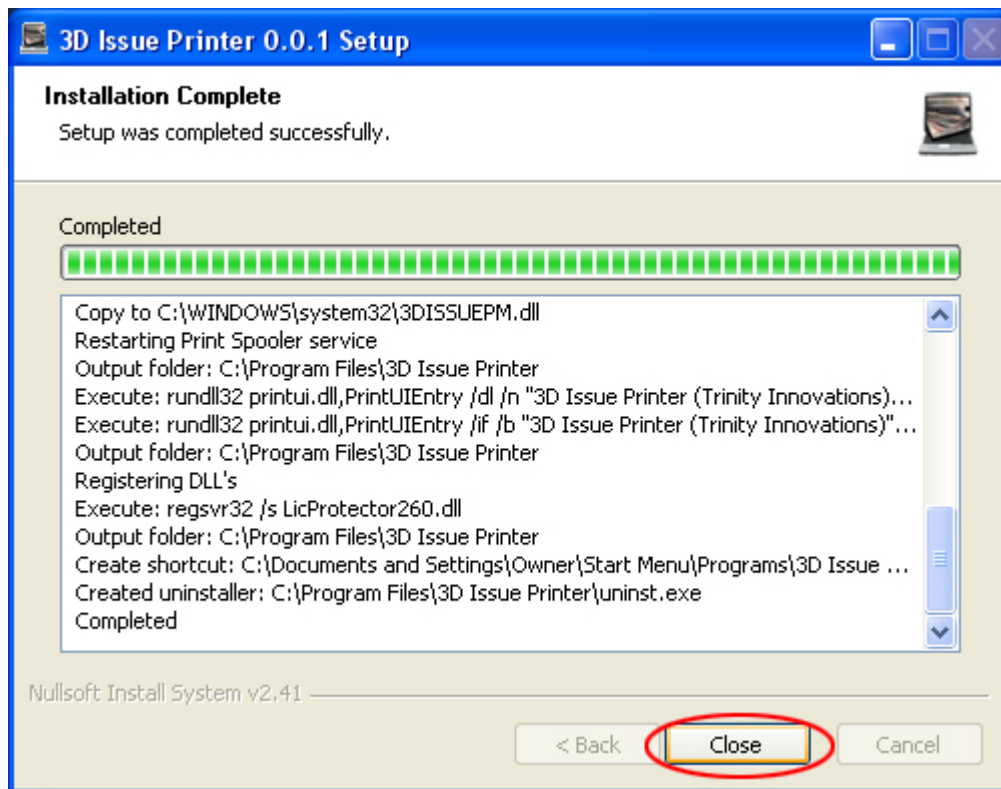
2. Select the folder you wish to install the software in.



3. You will then be presented with a warning message stating that the driver has not been authenticated by Microsoft Hardware Quality Labs. This is a standard message for any print driver that is not certified by windows. Please click on "Continue Anyway"



4. The installation is now complete. Click on "close" to finish the installation process.



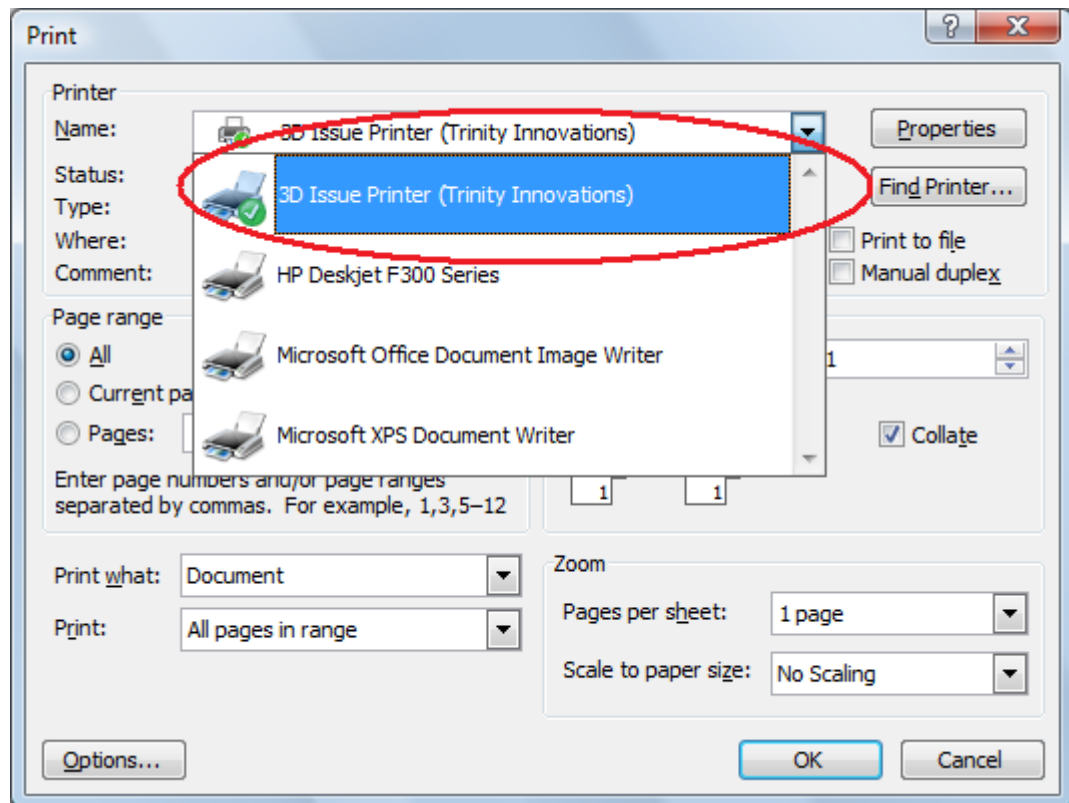
PART TWO:

CHOOSING 3D ISSUE PRINTER SETTINGS

Now that you have successfully installed the 3D Issue printer driver, you can begin creating your 3D Issue digital editions.

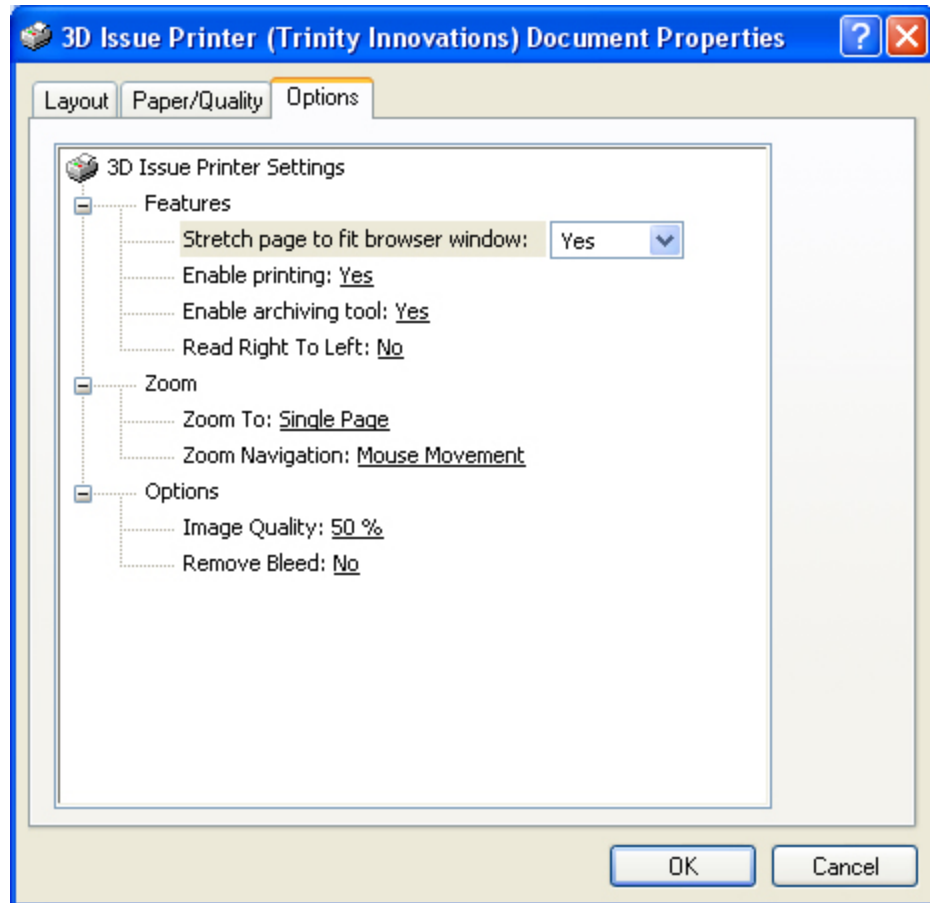
To start, open any document that you wish to convert and click on print.

1. In the print dialogue box you will be presented with a list of printers to send your document to. Please select "3D Issue Printer"



2. Once selected. Click on the “Properties” button to the right of the printer. The Printer Dialog box will allow you to choose the features that you wish to enable or disable in your digital edition. This dialog box will have 3 tabs : “Layout”, “Paper / Quality” and “Options”. Click on the “Options” tab.

NOTE: CHOOSE THESE SETTINGS APPROPRIATELY AS ANY EDITING TO THIS PARTICULAR DIGITISED EDITION IN THE FUTURE WILL HAVE TO FALL UNDER THESE SETTINGS!! IN ESSENCE THEY ARE THE MASTER SETTINGS FOR THIS ONE PUBLICATION!!



3. Here you can specify the output quality and also choose the features that you wish to enable or disable in your online digital edition

a. Stretch page to fit browser window

If "Yes" is selected, the 3D Issue ensures that the initial page size of the digital edition (before the user zooms in) is maximised to the available width and height of the browser window.

If "No" is selected, the 3D Issue initial page size is displayed at a fixed proportional size. This option is best used in publications with a large volume of pages, as the digital edition will load and run 3-4 times faster.

b. Enable Printing

Not all publishers wish to make their publications available for print to their end users for digital rights management (DRM) purposes. If you want to disable printing in your 3D Issue. Please switch this to "No"

c. Enable archiving tool

If you have many previous publications on your site, you have the option to

interlink these files through a drop down box within the 3D Issue flash magazine. Here users can choose from all issues that you permit access to. This feature is populated through an XML file that will reside at a fixed location somewhere on your site.

d. Read right to left

This feature is for publications in Arabic or Hebrew, where print editions are read from right to left. Should your publication suit this orientation, then please switch this option to 'Yes'. This will ensure that your publication is presented to your readers in its natural format.

e. Zoom to {single Page / Double Page}

By default, our digital editions are configured to zoom to one page at a time. You can change this to zoom to two pages at a time, if you'd rather.

f. Zoom navigation

There are 2 ways to navigate around a page when the user has zoomed in. Either by moving the mouse or by clicking and dragging the page. You can choose your preferred option here.

g. Image Quality

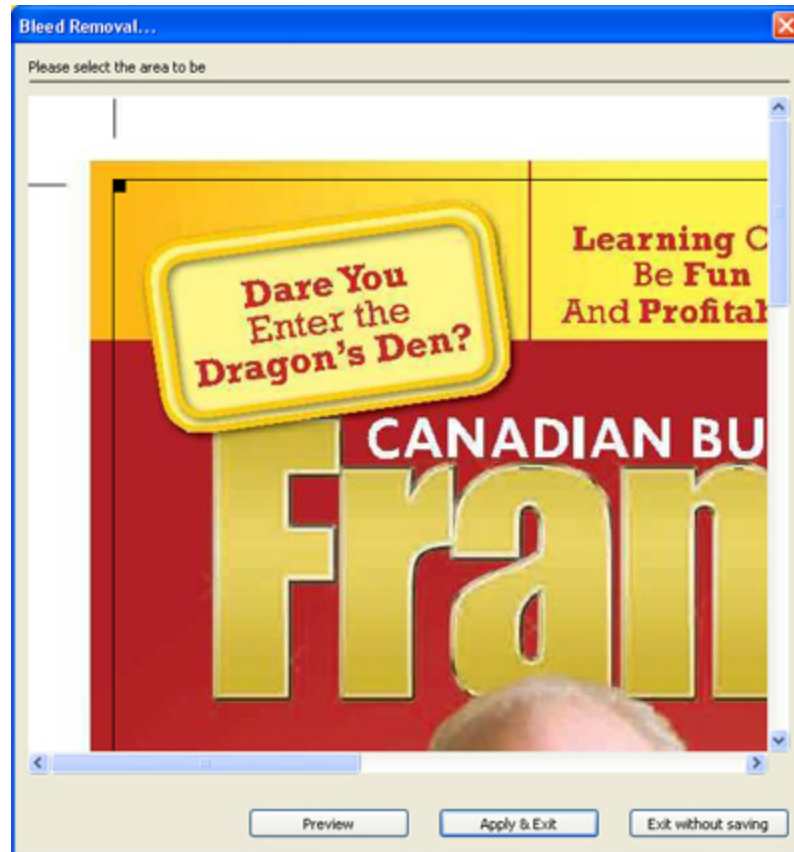
This is perhaps one of the most important options as it directly effects the quality and size of your digital edition. We have set the default value to "50%". However, only you can determine what is best for your publication. The higher the quality the larger the file sizes and hence, the longer it takes for these digital editions to load. 'Trial and Error' may work here.

h. Remove Bleed

Normally when a publisher sends files to a printing company for printing, these files have crop-marks or bleeds around the page. These markings tell the printer where to cut the paper.

If your source files have these markings and you wish to remove them, please switch 'Remove Bleed' option to 'Yes'.

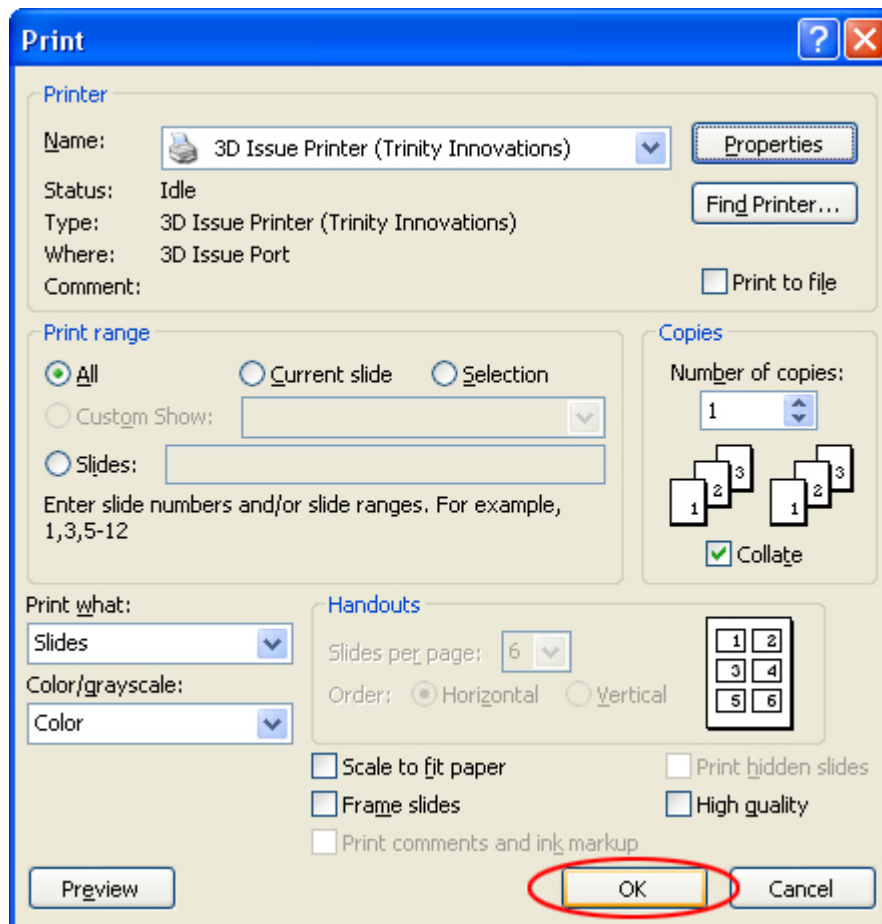
When selected, during the conversion process, the user will be presented with the "Remove Bleed" dialog window. Here you must specify the area that you want removed. To do this, click and drag the squares on all four corners inwards to the point at which the two lines would intersect. It will give you digitised a cleaner, more professional look.



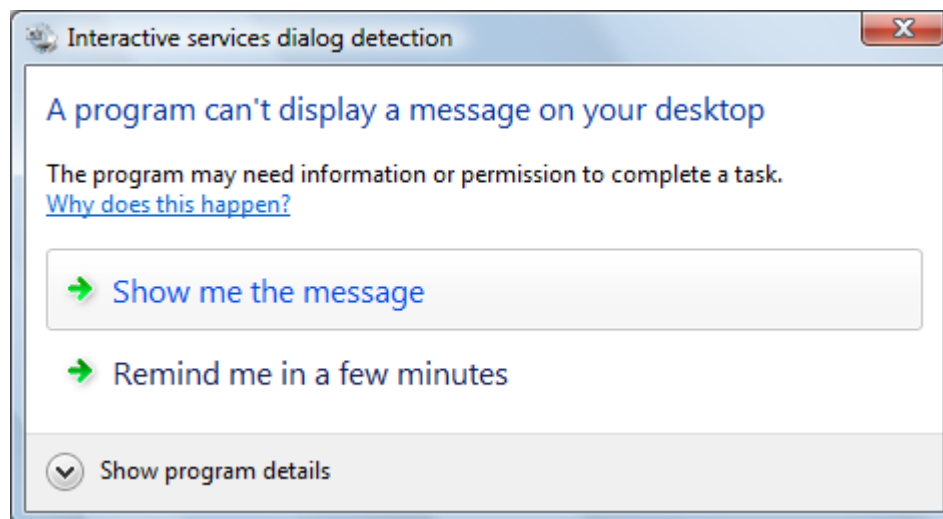
- i. Once you have finished selecting your preferences, please click "OK" to return to the main printer dialog window.

4. You are now ready to publish your 3D Issue.

Click on the "OK" button to begin the conversion process.



5. For Vista you will see the following message.



Hit "Show me the message", this will take you away from the desktop to allow you to Print

your 3D Issue as you will see below.

PART THREE: PRINTING YOUR 3D ISSUE

The 3D Issue Printer dialog window, below, appears along with a window that will guide you back to the desktop when you define the output directory and the name of your project folder. By default the digital editions will be outputted to the “c:/3D issue Printer/” folder and the project will be given a default name “issue{N}”

3D Issue Printer v1.0 Trial Version

3D ISSUE

Output

☒ New digital publication ☐ Edit existing publication

C:\3D Issue Prints\issue1 Browse...

NOTE: When editing an already existing publication, please remember to backup your publication before any operation.

Edit existing publication

Action: Page 1 of 0

Replace Pages 1 to 1 of 0

With Pages 1 to 1 of 0

Publication

3D Issue Printer Demo

SEO Info: Print Demonstration 1

Edit... Remove New...

Print Layout

☒ Single page ☐ Double page spreads ☐ Mixture of both

Convert Exit

1. Publication

It is here that you select the flash magazine template that you wish to associate with the 3D Issue you are creating. By default you are supplied with 1 template per company. If you are managing multiple company templates or have purchased unique templates for each

publication, all templates would be listed in this drop down list.

2. SEO Info

For each page in the document you are converting, a html page is created. These html pages allow you to access any page in the publication by typing in the `{pagenumber}.html`. For each of these html pages you can also enter your google analytics ID and your meta tag information.

3. Print Layout

Publishers can design documents as either single page layouts or sometimes these are designed as double page spreads. They can even be a combination of both. See a sample PDF below. This PDF states that there are 59 pages but as we can see there are a number of pages that are double page spreads. The true page count is 88 pages. In order to output the digital edition to the true page count. We must select the “mixture of both” option.



Note, that when selecting “mixture of both”, the first and last PDF pages must be single page layouts. If you choose “double page spreads”, the first PDF page must contain both the back (on the left) and front (on the right) pages.

4. Once you have selected all of the above option, click on “Convert” to begin the production process.

3D Issue Printer v1.0 Trial Version

3D ISSUE

Output

☒ New digital publication ☐ Edit existing publication

C:\3D Issue Prints\issue1 Browse...

NOTE: When editing an already existing publication, please remember to backup your publication before any operation.

Edit existing publication

Action: Page: 1 of 0

Replace Pages: 1 to 1 of 0

With Pages: 1 to 1 of 0

Publication

3D Issue Printer Demo

SEO Info: Print Demonstration 1

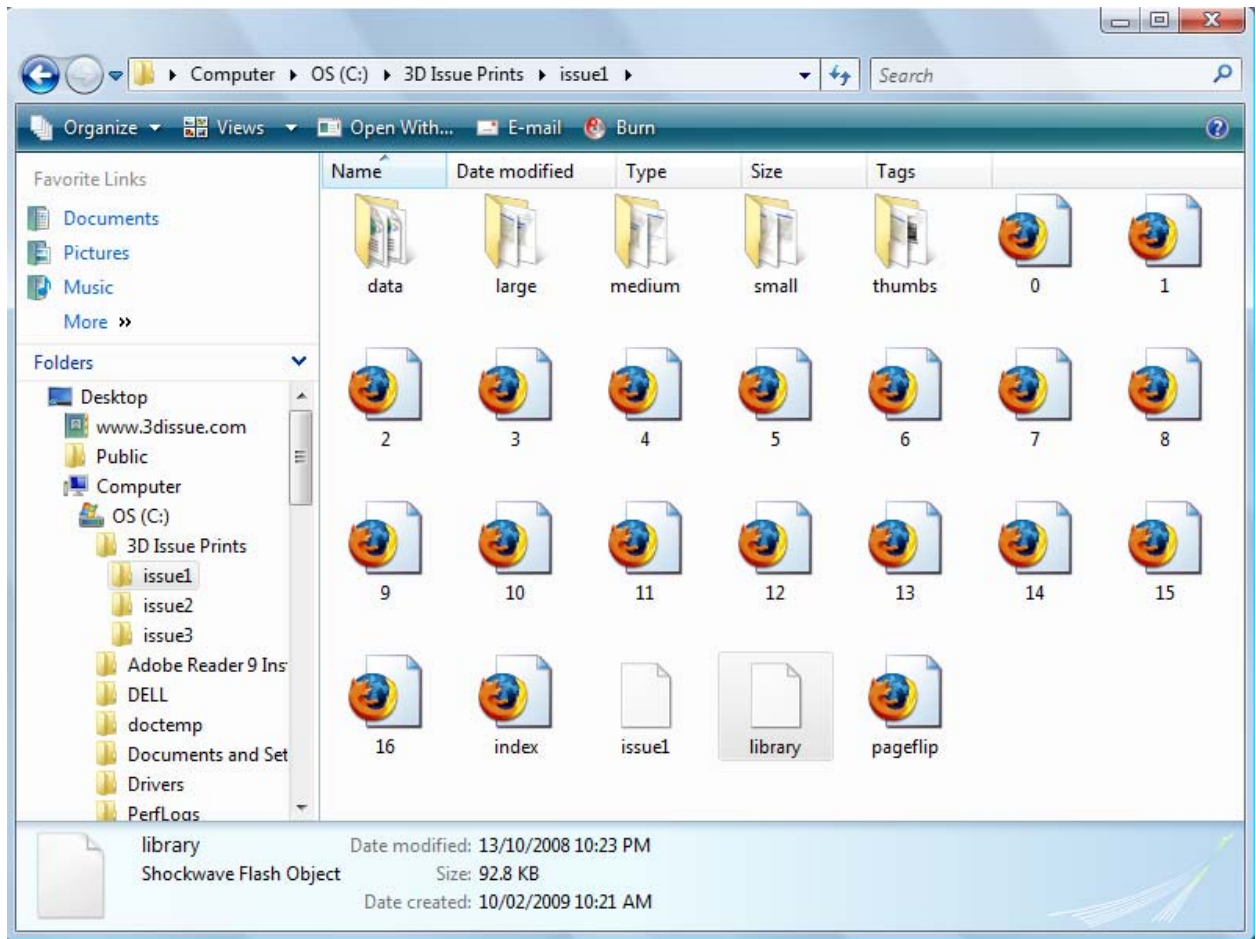
Edit... Remove New...

Print Layout

☒ Single page ☐ Double page spreads ☐ Mixture of both

Step 3 of 8 - 50 % Cancel Exit

5. Once the conversion is complete the above window will disappear automatically. It is now you can hit the "Return to Desktop Tab" that Vista prompts. Your project folder is now ready to be posted. You will find it at the in the Local Disk (C:) under 3D Issue Prints.



6. Your digital edition is now ready for uploading to your website. One of the HTML files that is generated during the conversion is “index.html”

Once you have uploaded the digital edition to your site

Say, for example, you uploaded the digital edition to

www.yourCompany.com/magazines/ and your project folder was named “issue1”

To launch the digital magazine simply type in the following URL:

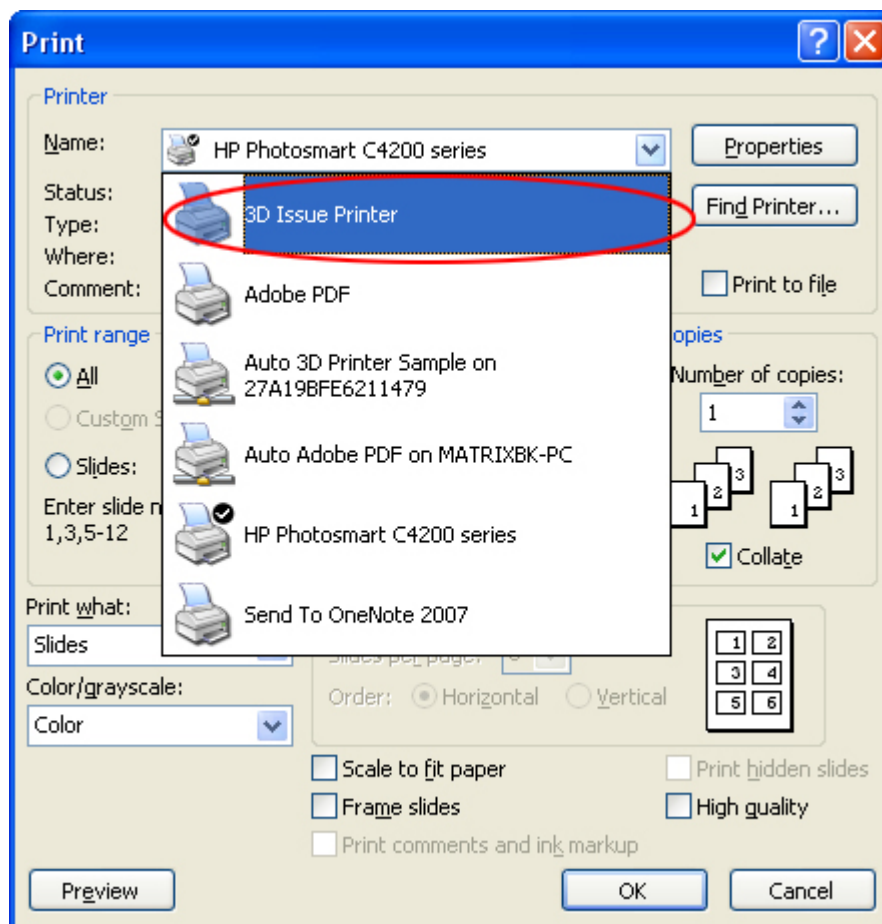
<http://www.yourCompany.com/magazines/issue1/>

PART FOUR: ADDING OR REPLACING PAGES

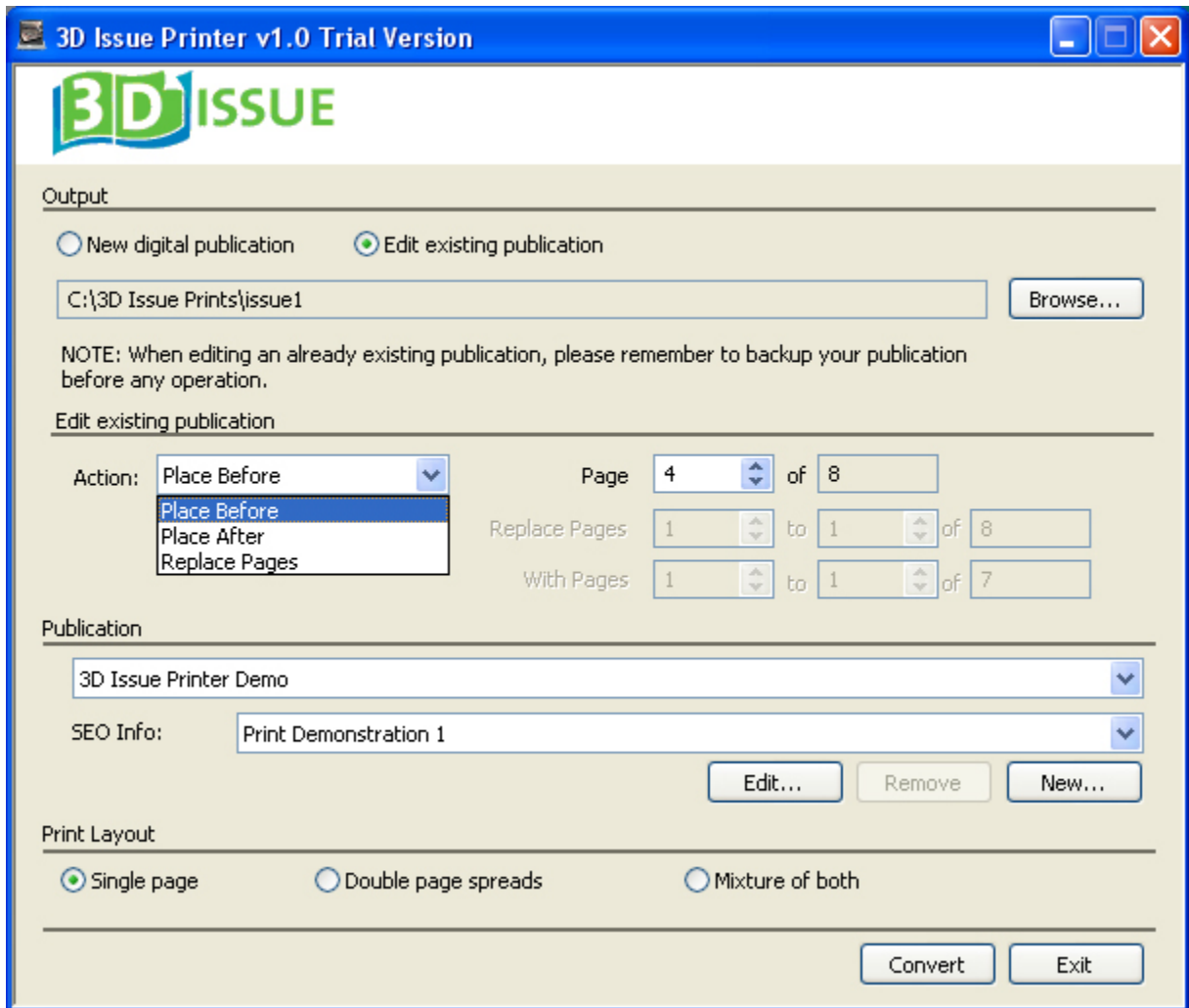
You can also generate digital editions from multiple files or files from a multitude of different software packages.

The most important thing to remember when creating a digital edition in multiple sessions is that it is the settings selected for the print driver property settings during the first conversion that are set as the master settings.

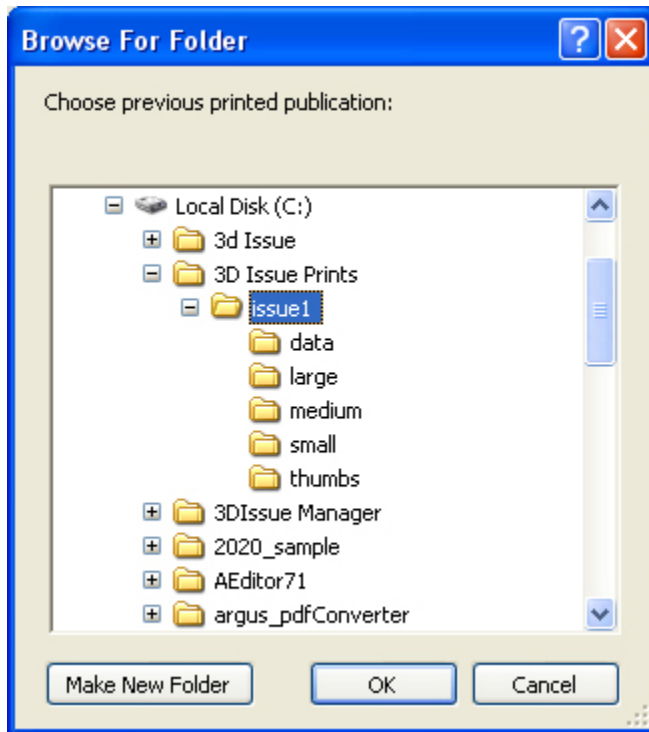
If you change these settings for any other section of the conversion, they will not be applied. Only the settings in the first conversion will be applied.



Therefore for each other conversion simply click "Print" from your software application, Select the "3D Issue Printer" and click "OK".



1. when the “3D Issue Printer” interface opens, in the output folder select the “Edit existing publication “
2. Click on the “Browse” option and navigate to the project folder that you are editing,



3. Once you have selected the issue that you wish to edit, you must select where in the current edition you want to add the new segment.

There are 3 options available

Place Before

when selected, insert the page number, you want the new segment added before

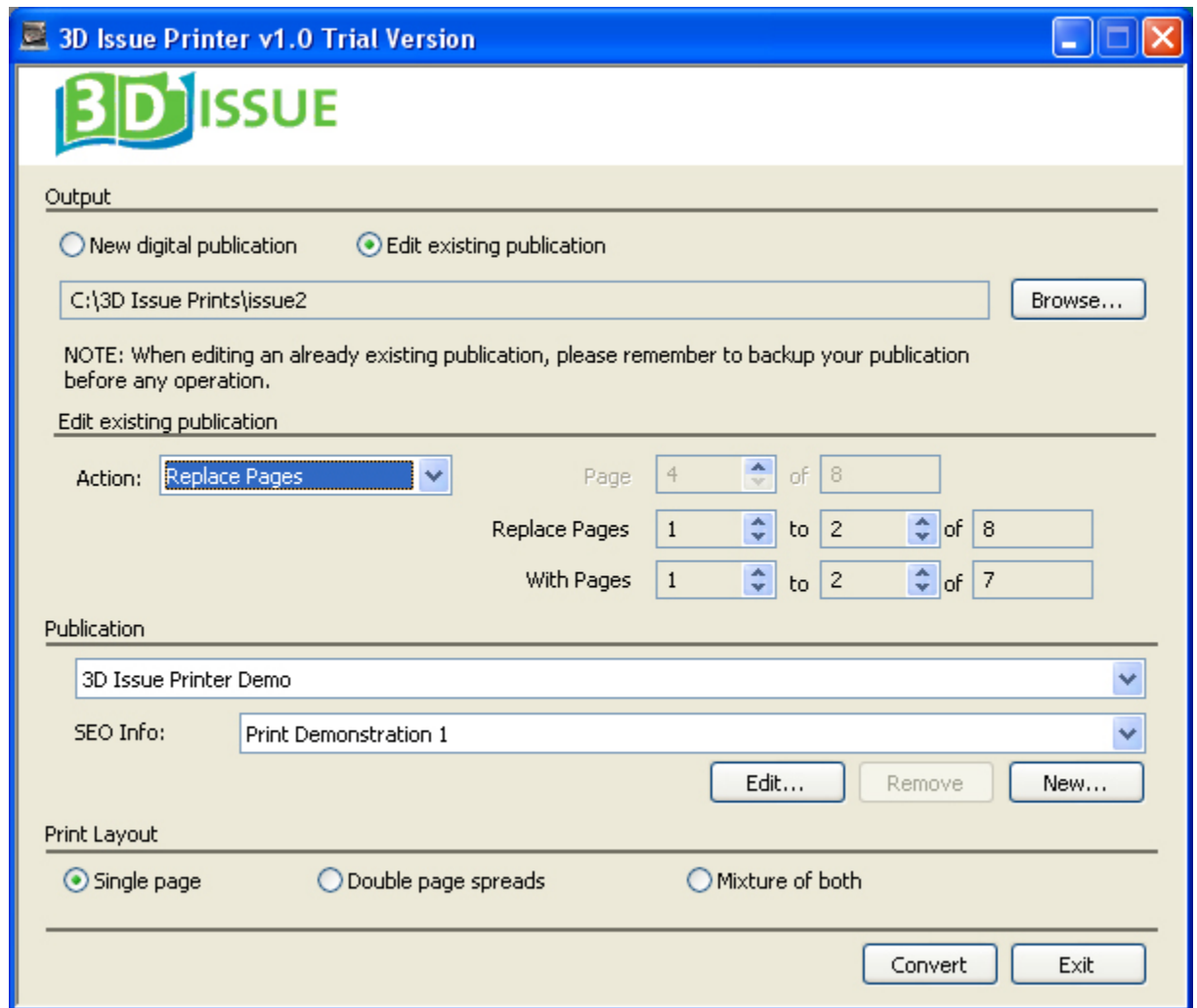
Place After

Insert the page number you wan the new segment placed after

Replace pages

when you are replacing existing pages, it is important to remember that the section of pages that you are removing correlates to number of pages that you are adding. To ensure this, we have disabled the ability to enter the page ranges manually.

To specify the page range, click on the up and down arrows beside each page number field. As you alter one value you will see the page ranges alter in the other fields to correspond with your selection.



4. Once you have specified the correct range. Click on “Convert” and then “Continue” once the process has completed.
5. After you exit the application, the project folder that you have edited will open. You will notice all additional pages have been added to your project folder

PART FIVE: UPLOADING YOUR 3D ISSUE

Once you have finished adding to your digital edition, you can begin uploading the files to your website. All the files that you need for running your digital edition on your website have been outputted to the project folder.

To upload, simply open your FTP uploading software and drag and drop your project folder onto your website.

Say, for example, you upload the project folder “issue2” to the following URL

<http://www.yourWebsite.com/emags/>

Once uploading has completed, to run your digital edition, simply type in the following URL

<http://www.yourWebsite.com/emags/issue2/>

This will launch your digital magazine.